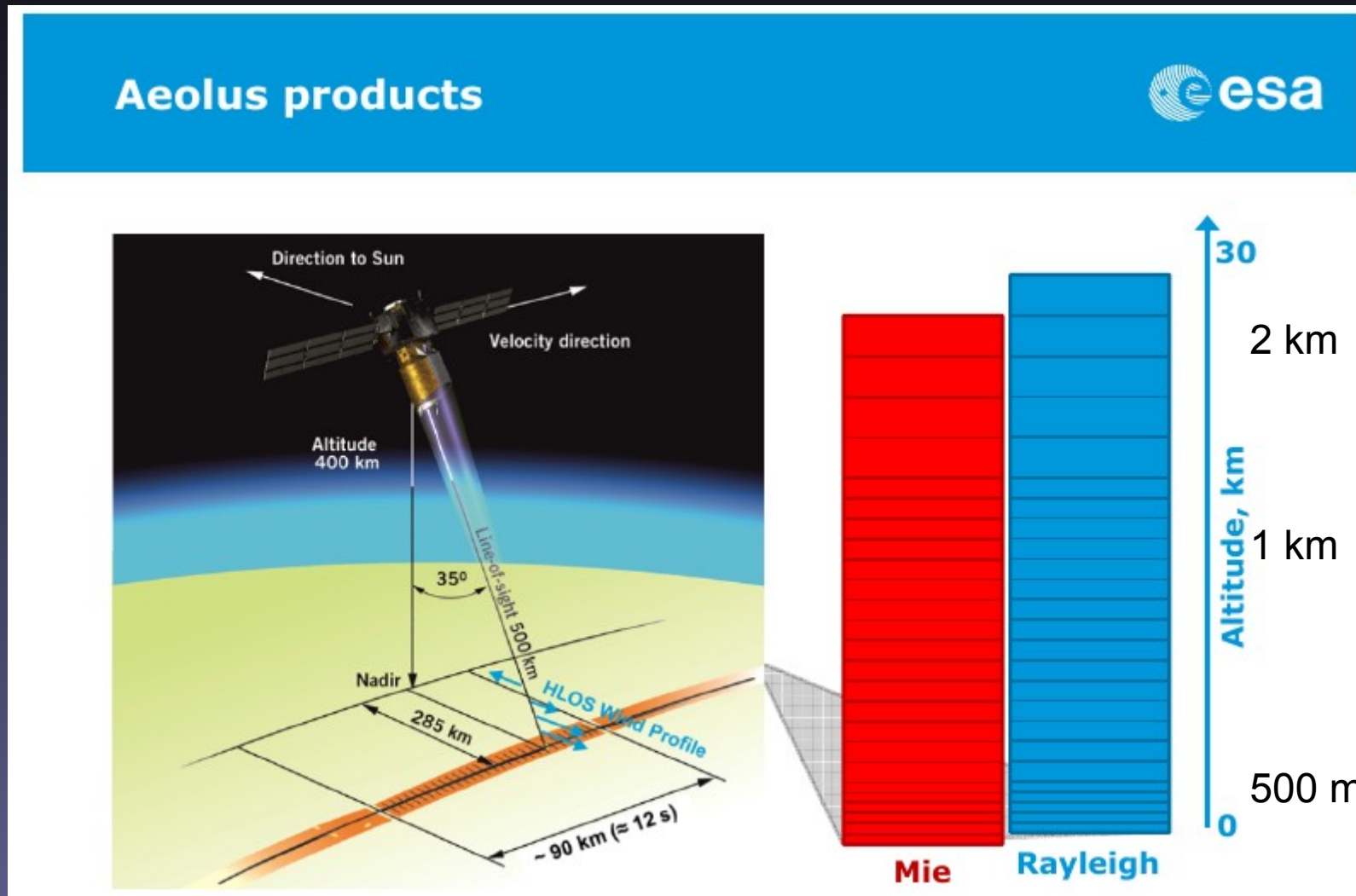


ADM cal/val workshop

Esrin, Rome
Feb. 2016

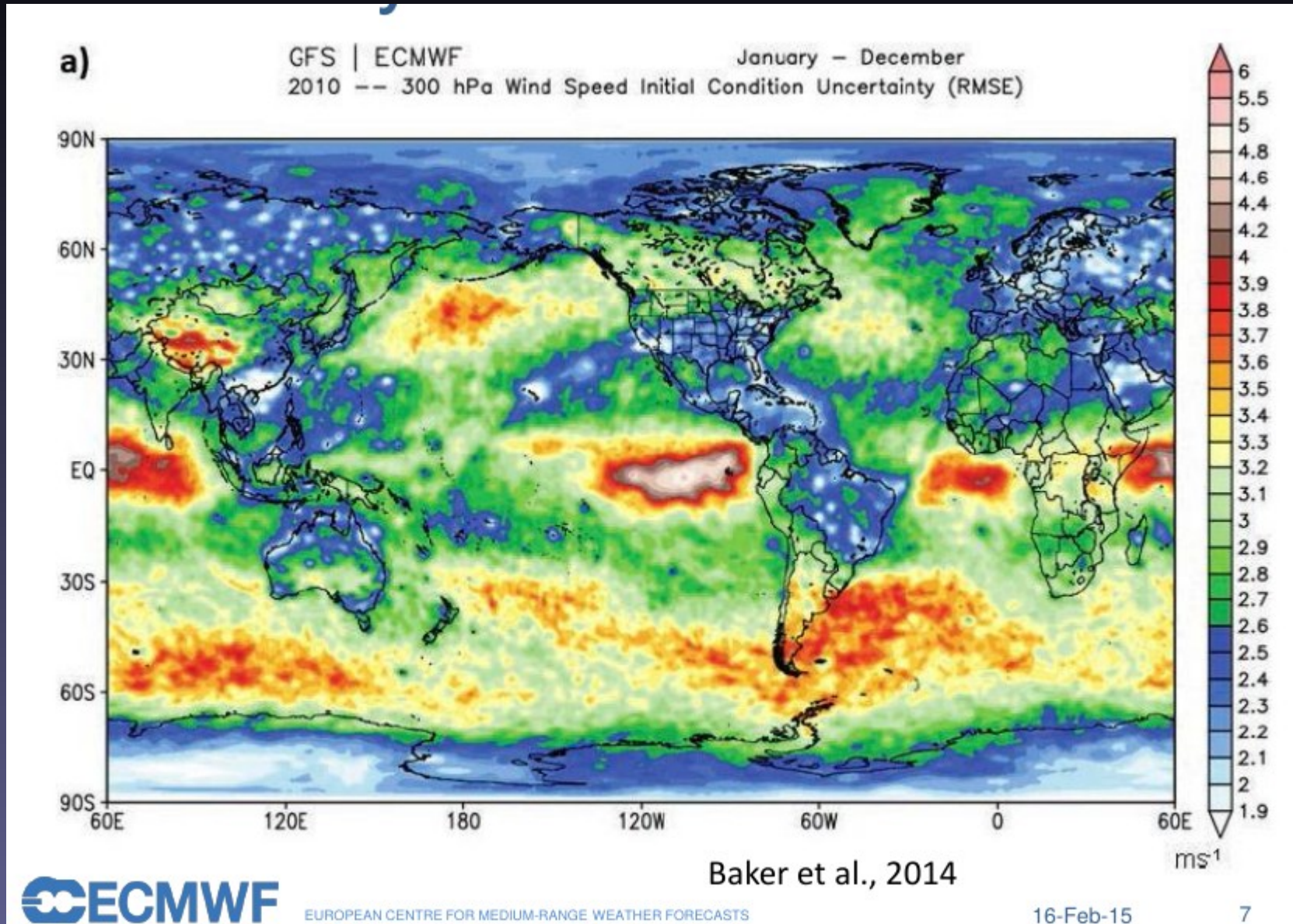
ADM-Aeolus measurements



ADM-Aeolus

- Launched late 2016 or early 2017
- Sun-synchronous dawn/dusk orbit
- Measurements
 - HLOS winds
 - Cloud/aerosol products
- Great expectations in terms of forecast improvements from NWP centers regarding global wind assimilation
 - ECMWF much involved in ADM-Aeolus
- Cal-Val activities starts 3 months after launch
- Cal-Val identified as critical for the mission success
 - Number of bias sources in the measurements
 - Strong requirements from NWP
 - Systematic errors < 1 m/s
 - Random errors < 2 m/s

Analysis uncertainties



Greatest impact on forecast expected in the tropics

ADM-Aeolus Cal-Val

- Importance of the cal-val activities (and monitoring measurements)
 - In the tropics (and the Southern Hemisphere)
 - In the UTLS
- Strateole 2 project was much welcomed!